

C Handling the "Esox" Management Program

C 1 Starting the management program

The program can be started with

- the **"Esox" program icon** in the "Carl Zeiss" program group of the Program Manager,
- the **command line** of the "Run" option in the "File" menu of the Program Manager, or
- the **File Manager**.

The program file name of the management program is "esox.exe".





Consult your MS-Windows User Manual for detailed information about starting programs via Program Manager and File Manager.

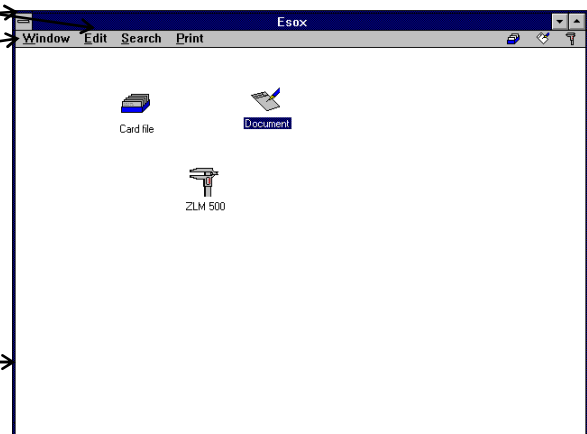
C 2 Windows of the management program

After having started the management program, a program window appears on the screen. This window contains different sub-windows.

C 2.1 Program window

The program window occupies the full screen and contains the following features:

- Title bar with program title "Esox",
- Control Menu button ,
- Menu bar, ,
- Minimize Window button ,
- Maximize Window button  and
- Window borders permitting window resizing (expansion and contraction of window height and width).

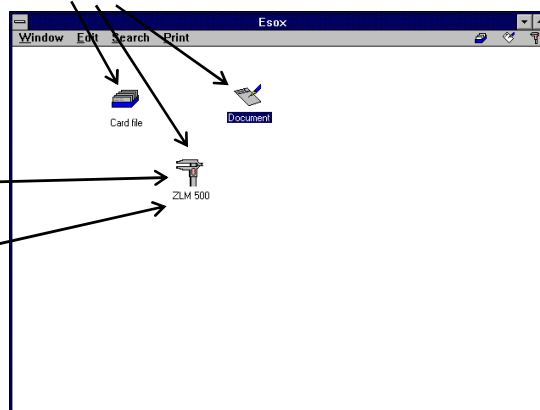


C 2.2 Application windows

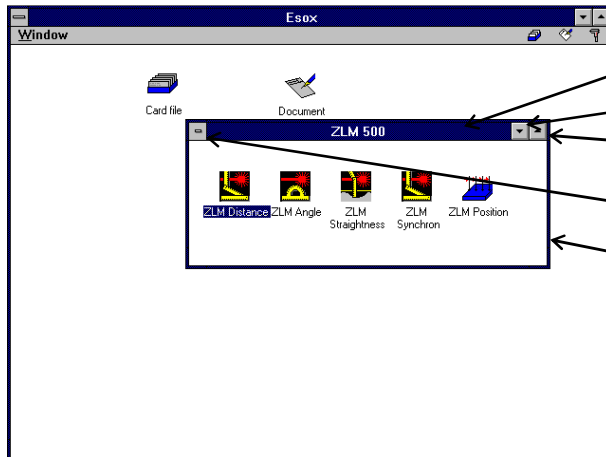
The program window contains different application windows.

When the management program is started the first time all application windows are reduced to an icon (minimized window) and contain

- program item icon,
- title bar with the program item name.



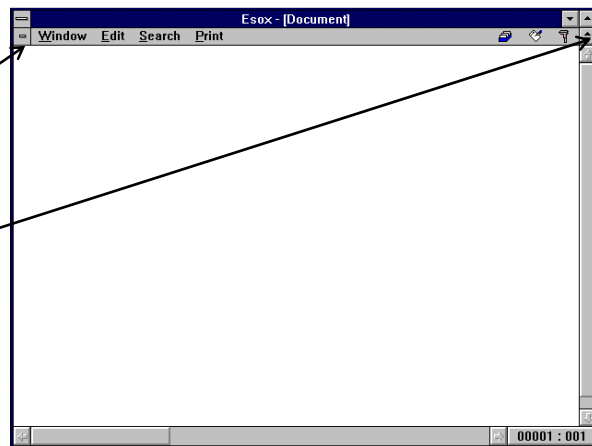
The minimized application windows can be restored to regular size by double-clicking and then contain:



- title bar with program item name,
- Minimize window button ,
- Maximize window button ,
- Control Menu button and
- window border for window resizing.

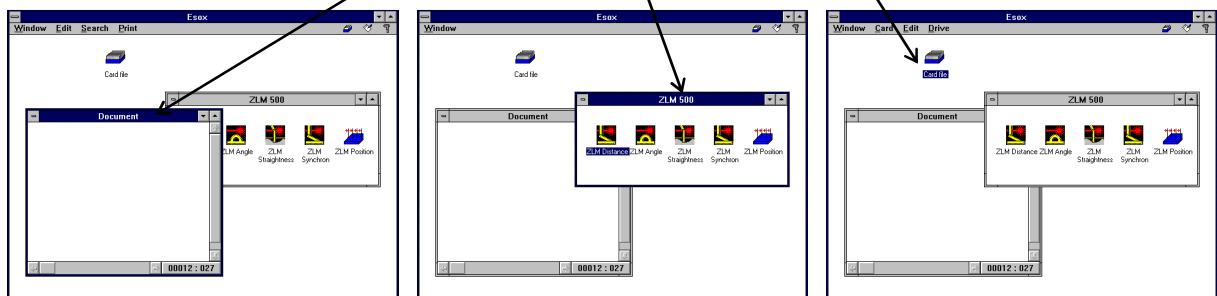
Only one application window each can be maximized at a time. In this case the program item name complements the program name in the title bar of the program window. The menu bar contains a Control Menu button

and a Restore button for the application window.



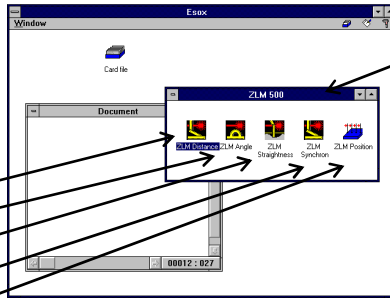
NOTE: The operation of the management program is similar to that of multi-document programs (such as Program Manager or File Manager). The difference is that the "document windows" here always have different contents. Therefore the term "application window" is used here.

Only one of the application windows can be active at a time. The active window is distinguished by its highlighted title bar.



Only the active window will respond to entries via the keyboard.

When the management program is started, the measurement programs are not active yet.

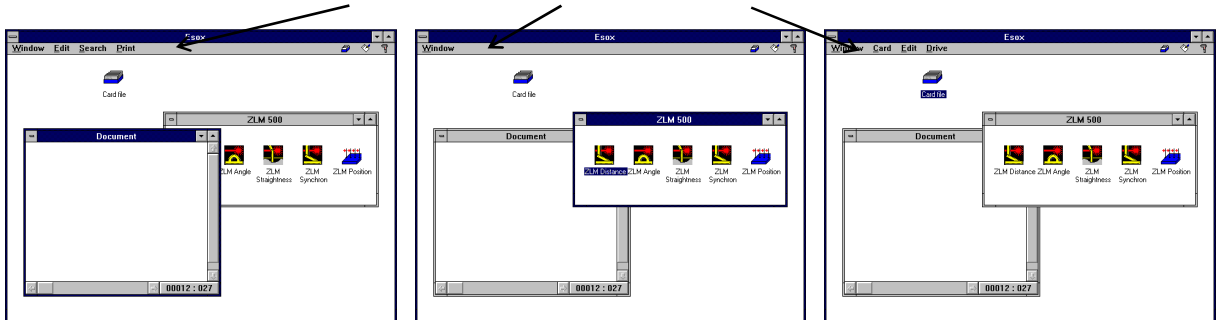


For each measuring instrument, the installation program creates a separate application window.

For each measurement program, a program item icon exists in one of the application windows.

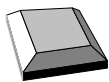
C 2.3 Working with menus

The menu bar of the program window is also used for all application windows. Since each application window has specific menu items that make sense only for this window, the menu bar changes when you activate a different application window.

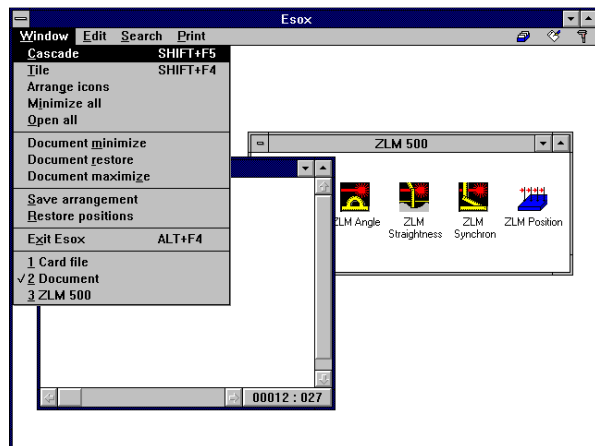


The first menu item, "Window", is common to all application windows. Via this menu option you can access all functions required for arranging or resizing the active application window or activating another application window.

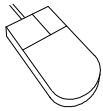
C 2.4 Activating application windows



Choose the "Window" menu and open it. At the bottom of the submenu you can find a list with the names of the application windows. Choose the name of the application window to be activated.

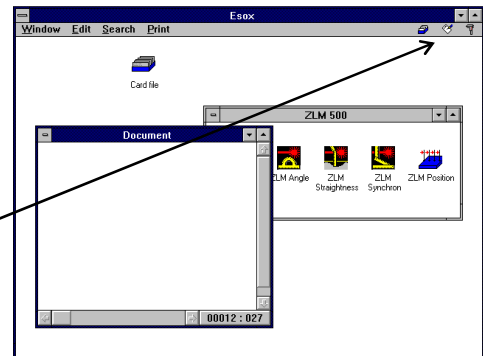


Another possibility is to press the key combination **Ctrl** + or the key combination **Ctrl** + **F6** several times until the respective application window is activated. When all application windows are minimized to an icon, you can activate an application window by pressing the keys , , , and .

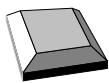


Click the application window you want to activate or use the mouse to choose the "Window" menu; from its pull-down menu select the option with the name of the application window to be activated.

The icons at the right menu border can also be used to activate an application window. Click a menu icon, and the respective application window will be maximized.



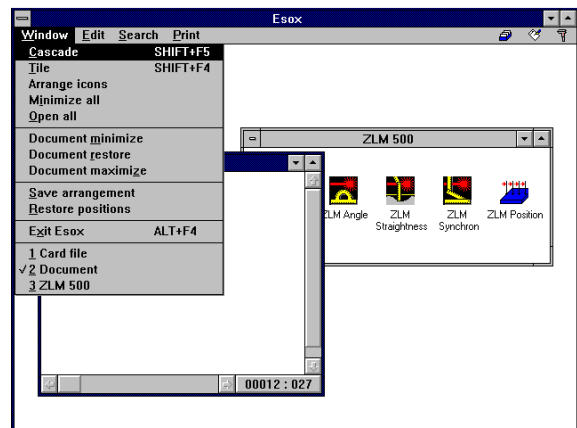
C 2.5 Changing the size of application windows




The "Window" menu contains three sizing options: **minimized, maximized and regular size.**












If the application window to be resized is not active, you must first activate it.

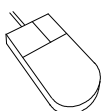
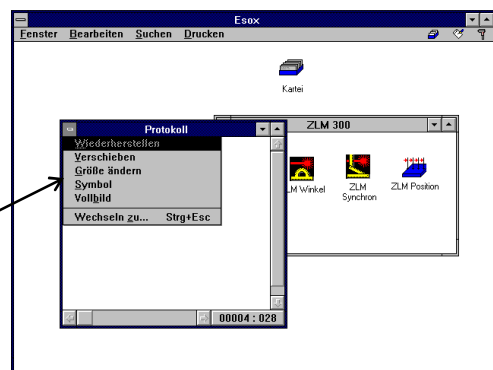
Then choose the "Window" menu and then the desired submenu option.



To open an active application window in minimized (icon) size, simply press the  key.

For **resizing a regular size application window:**



- open the Control Menu of the program window by pressing the key combination  + .
- By pressing the keys  and  you can open the Control Menus of the application windows.
- Open the Control Menu of the application window to be resized.
- Choose the menu option "Size".
- Then press the  key and the  key.
- By pressing the keys , , , and  you can now resize the application window.
- Complete the size change by pressing the -key.





Icon ### regular size

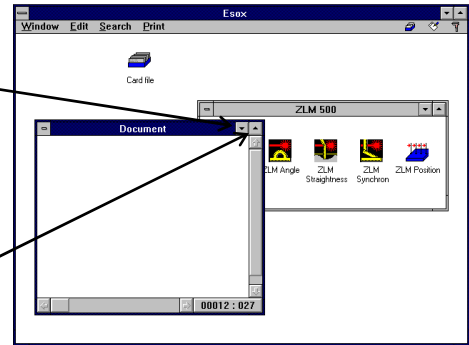
If the icon of the application window is not visible, first activate the application window. Then double-click the icon.

Regular size ### minimized (icon) size

If the  button of the application window is not visible, activate the application window first. Then click the  button.

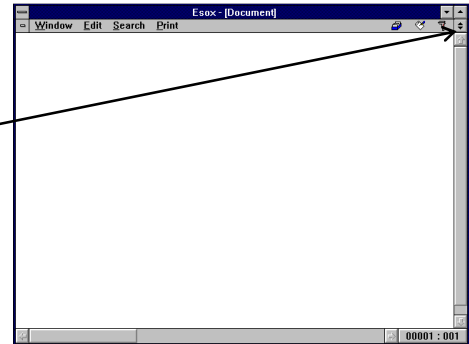
Regular size ### maximized (full-screen) size

If the  button of the application window is not visible, activate the application window first. Then click the  button.



Maximized size ### regular size

Click the  button.

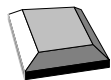










Resizing regular size application windows

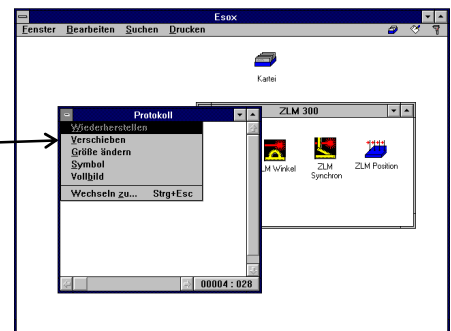
Move the mouse cursor to the border of the application window to be resized. The mouse cursor becomes a double-headed arrow. Press the left mouse button and keep it depressed. Now drag the mouse to resize the application window. Then release the mouse button.


C 2.6 Moving application windows

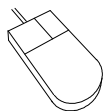
Regular size or minimized application windows can be moved within the work area of the program window.



- The Control Menu of the program window can be opened by pressing the key combination  + .
-
- By pressing the keys  and  you can open the Control Menu of the application window to be moved.
- Choose the menu option "Move".
- To move the application window, press the keys , ,  and .

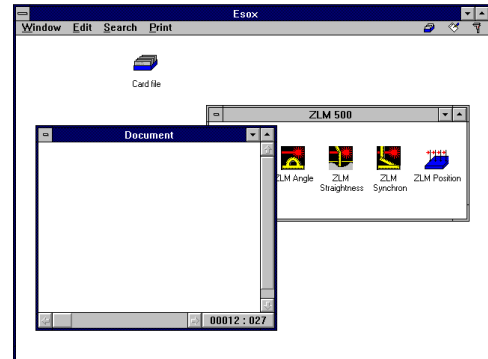


- Complete the movement by pressing the  key.



- With regular size application windows move the mouse pointer to its title bar. With minimized application windows, move the mouse pointer to the icon.

- Press the left mouse button and drag the window or icon to the desired position.
- Then release the mouse button.



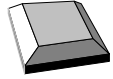
C 2.7 Menu options for arranging several application windows






The "Window" menu contains some options which permit multiple application windows to be arranged at once.

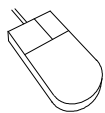
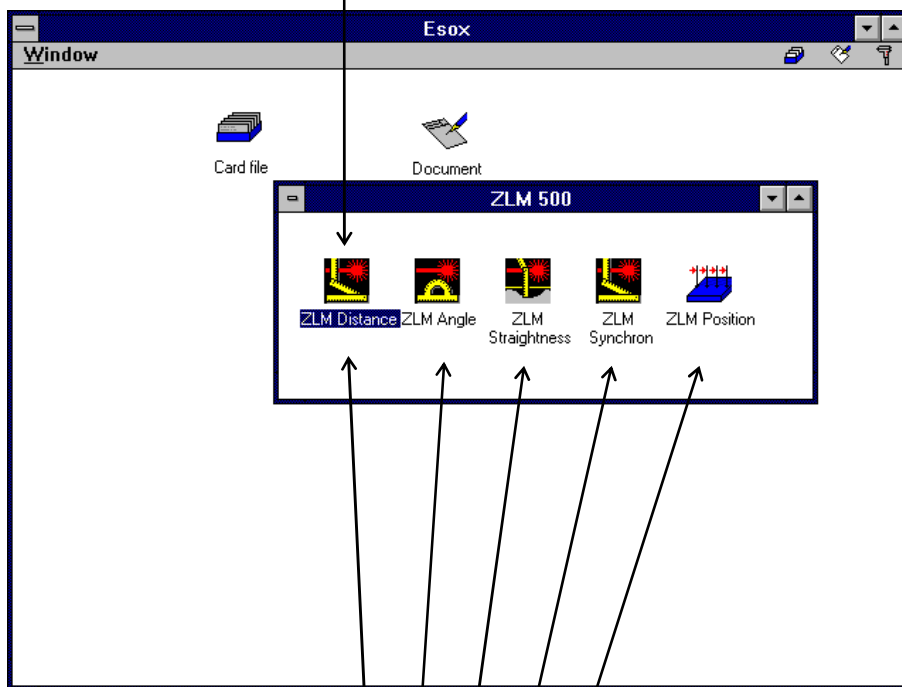
"Window - Cascade"	All regular size application windows are arranged so that the title bar of each application window is visible.
" Window - Tile"	If this option is activated, all application windows that have regular size are shown approximately equally sized in non-overlapping arrangement, filling the available work area of the program window.
" Window - Arrange Icons"	On activating this menu option, icons contained in the active application window are arranged from left to right in one or more rows. In any other case the icons of application windows that were minimized before this option was activated are arranged from left to right in one or more rows.
" Window - Minimize all "	All application windows are minimized to icons.
" Window - Open all "	On activating this option all minimized application windows (icons) are opened to regular or maximized size.
" Window - Save arrangement"	Positions and sizes of all application windows are saved in a file. When the management program is started the next time, the application windows will adopt the stored positions and sizes.
" Window - Restore positions"	The application windows will adopt the positions and sizes saved last by means of the menu option "Save arrangement".

C 3 Starting measurement programs

For each measurement program an icon exists in one of the application windows. The installation program creates a special application window for each measuring instrument. Activate the application window containing the icon of the measurement program to be started. Then customize or maximize this application window.



The program name of one of the program item icons is highlighted. For highlighting and thus choosing the icon of the measurement program to be started, press the keys , ,  or  and then the  key to open it.

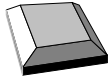


Double-click the icon of the program item to be started.

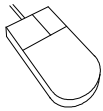
After the start of the measurement program, all the other program item icons are removed from the application window. Now, the content of the application window is managed by the measurement program. Before another measurement program can be started for the same measuring instrument, the current measurement program must be exited. Consult the section describing the respective measurement program on how to exit it.


C 4 Exiting the management program

Exit the management program "Esox" before switching off the computer to avoid the loss of the contents of the measurement document (record).



Choose the option "Exit Esox" of the "Window" menu or press the key combination .



Double-click the Control Menu button  of the program window.

